



Comprehensive Plan

Public Hearing – April 22, 2026

Kendall County Land Resource Management Plan Update

Project Website – Staff Coordination – Focus Groups – Workshops – Open Houses – Public Hearing

Steering Committee – Regional Plan Commission – PBZ Committee – County Board

Evaluation & Vision

- County Assessment
- Policy Formation

Specific Elements

- Future Land Use
- Transportation
- Sustainability

Strategies and Support

- Implementation
- Review and Approval

Feb. 2025

May 2026

Community Input So Far....

4,730

Website Views

125

E-Newsletter Subscribers

185

Survey Submissions

51

Comment Map Ideas

11

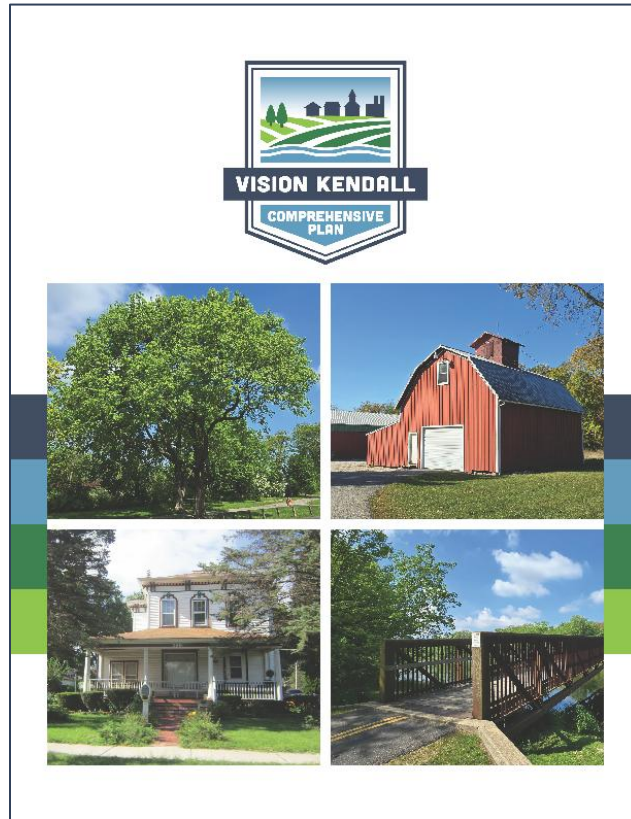
Outreach Events

230+

People Attended

As of 4/14/2026

Plan Outline



1. Introduction and Process

2. Existing Conditions and Trends

3. Vision

4. Character and Land Use

5. Mobility & Connectivity

6. Energy and Water

7. Economic Prosperity

8. Implementation

Review & Approval Process



- Public Preview at Annual Meeting – Feb. 7
- Steering Committee Meetings – Feb. 25 & Mr. 25
- 5 Open House Workshops – Feb. & March
- **Public Hearing – April 22**
- Regional Plan Commission Action – April 22?
- Zoning Board of Appeals – April 27?
- Planning, Building and Zoning Committee – May 11?
- County Board – May 19?

Land Resources Management Plan (1994-early 2026)

- Contained extensive goals and objectives for both planning and management.
- Contains separate chapters by Township or group of Townships, developed over a series of years.
- Contains extensive policies designed to implement the plan.

Comprehensive Plan (2026+)

- Consolidates key goals and objectives in a more concise county vision.
- Contains one overall plan for the County and created over about 18 months.
- Leaves policy decisions to the County Board and their Strategic Planning efforts.

Key Vision Elements

Preserve Rural Character

- Preserve Natural Areas
- Farmland Preservation

Promote Economic Development

- More local, good paying jobs
- Enhance and Diversify the Tax Base
- Promote Tourism, including Agritourism

Communications/Coordination

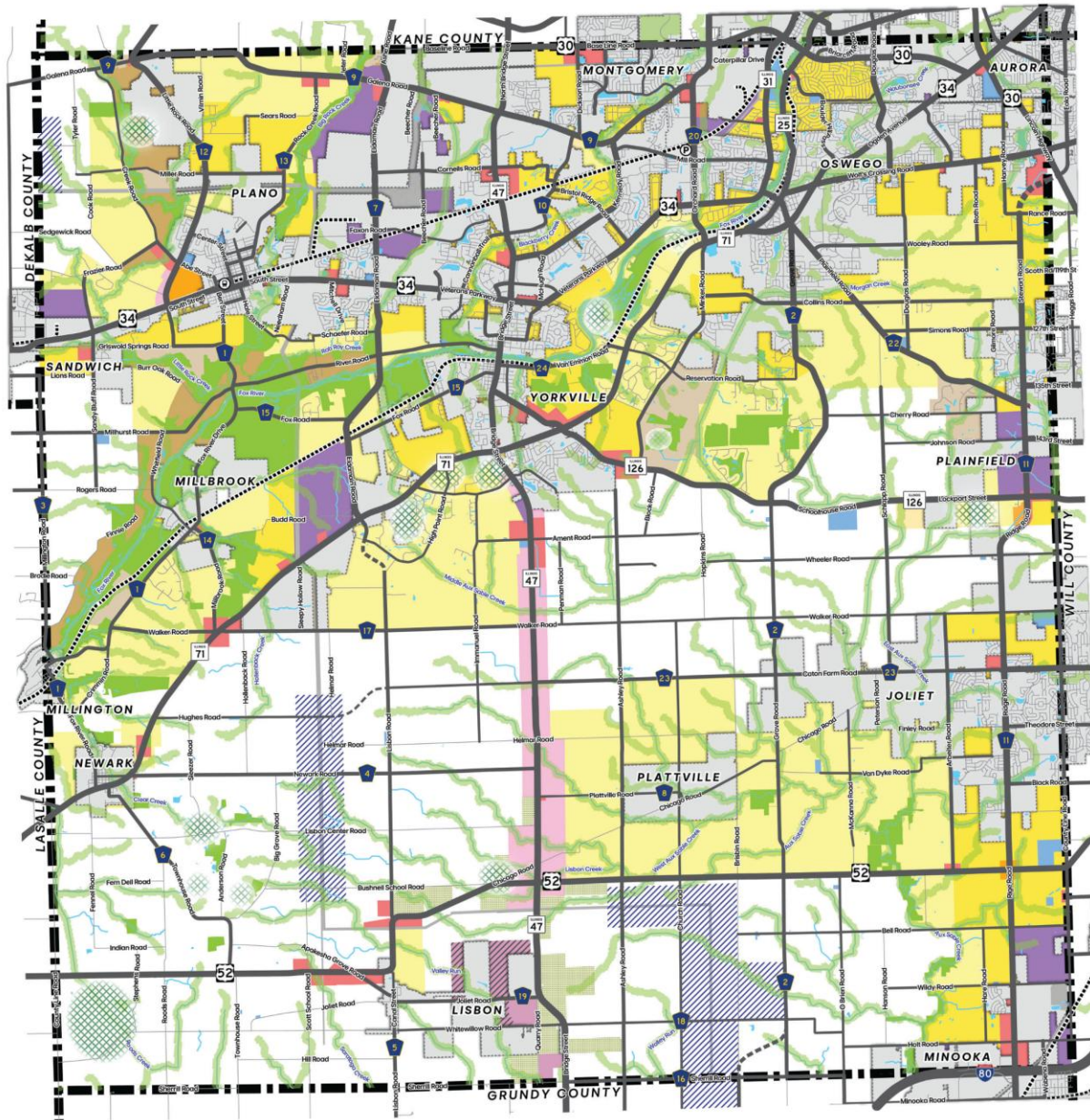
- Engage residents
- Governmental coordination between County, Towns and Townships

Connectivity

- Expand Trail Network
- Connect roads/Improve intersections



Future Land Use Map



Land Use Category

- | | |
|---------------------------|-----------------------------------|
| Agricultural | Transportation Corridor |
| Agricultural Conservation | Industrial |
| Countryside Residential | Mining |
| Rural Estate Residential | Potential Mining District |
| Rural Residential | Public Institutional |
| Suburban Residential | Electric Transmission |
| Commercial | Renewable Energy |
| Mixed Use Business | Open Space |
| Riparian Corridor | Additional Open Space Opportunity |

Roadway

- | | |
|--------------------------|-----------|
| Highway | Collector |
| Arterial | Local |
| County Roadway Extension | |

Boundary

- | | |
|--------|-----------|
| County | Municipal |
|--------|-----------|

Other

- | | |
|-------|----------|
| Water | Railroad |
|-------|----------|

DRAFT



4/2/2026



What Have Been Revised Since Draft 1

- Added a Local Regulations section to Chapter 8: Implementation
- Conducted updated population projections
- Refreshed the renewable energy site database
- Expanded definitions for future land use categories
- Researched municipal boundary agreements and created a new map
- Included additional details on the Kendall County Broadband Project
- Strengthened strategies for trail and solar farm development
- Updated the Scenic Routes inventory
- Revised Future Land Use, Economic Development, Alternative Energy, and Transportation maps based on feedback
- Improved map layouts for better readability
- Completed a comprehensive document review and edits



Visit www.VisionKendall.org for info.

