



Progress Update

Comprehensive Plan Committee – October 22, 2025

WIKADUKE Trail Meeting

- Meet with municipalities and townships along the corridor on Sept. 30th
- Good participation
- Most communities are still following the plan.
- County has jurisdiction to Plainfield Road. North of that is a mix of the Village of Plainfield, Oswego, and Oswego Township.
- Only major alignment change is extending north from the Stewart/Rance Road intersection bending east to tie to the Eola Road/Route 30 intersection.



Transportation



AIR



RAIL



BUS



ROADS



TRAILS

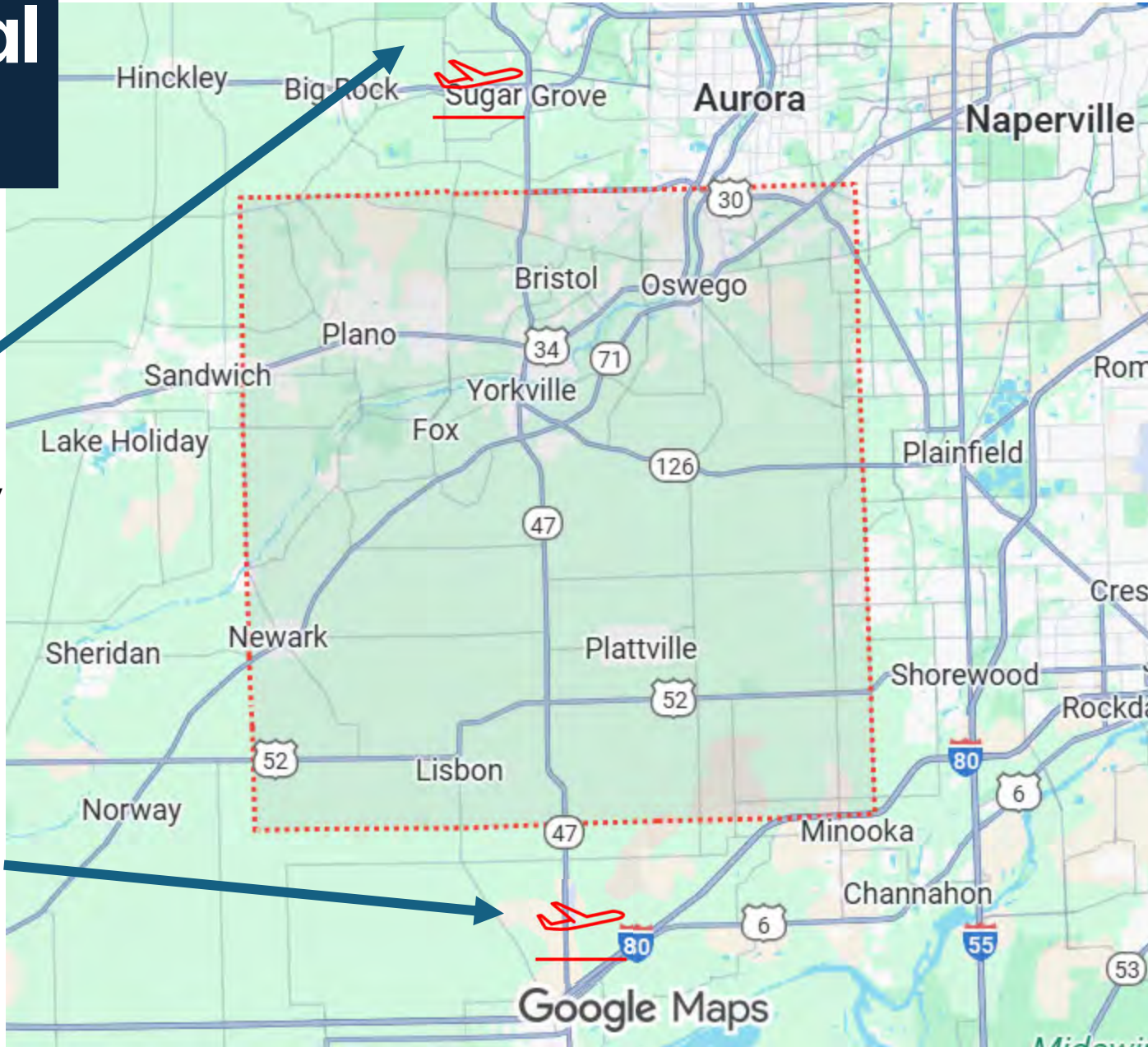
Commercial Aviation

Aurora Municipal Airport

- FAA Control Tower
- 6,500' primary runway
- 5,500' secondary runway
- 2 FBO's on-site

Morris Municipal Airport

- 5,500' primary runway
- 3,500' secondary runway under construction



O'Hare International Airport

- 50 miles northeast of Yorkville
- One of world's busiest airports with direct and connecting flights to almost anywhere in the world

Midway Airport

- 43 miles northeast of Yorkville
- Major airport, primarily serving U.S. domestic flights

Lewis University Airport

- 21 miles east of Yorkville
- FAA Control Tower
- 6,500' primary runway
- 5,697' secondary runway



Major Class 1 Railway with connections throughout North America



Illinois Railway (IR) is a regional railway providing local freight services, contract switching, car storage and transloading options. IR provides rail service to some of the largest sand mining operations in the USA.



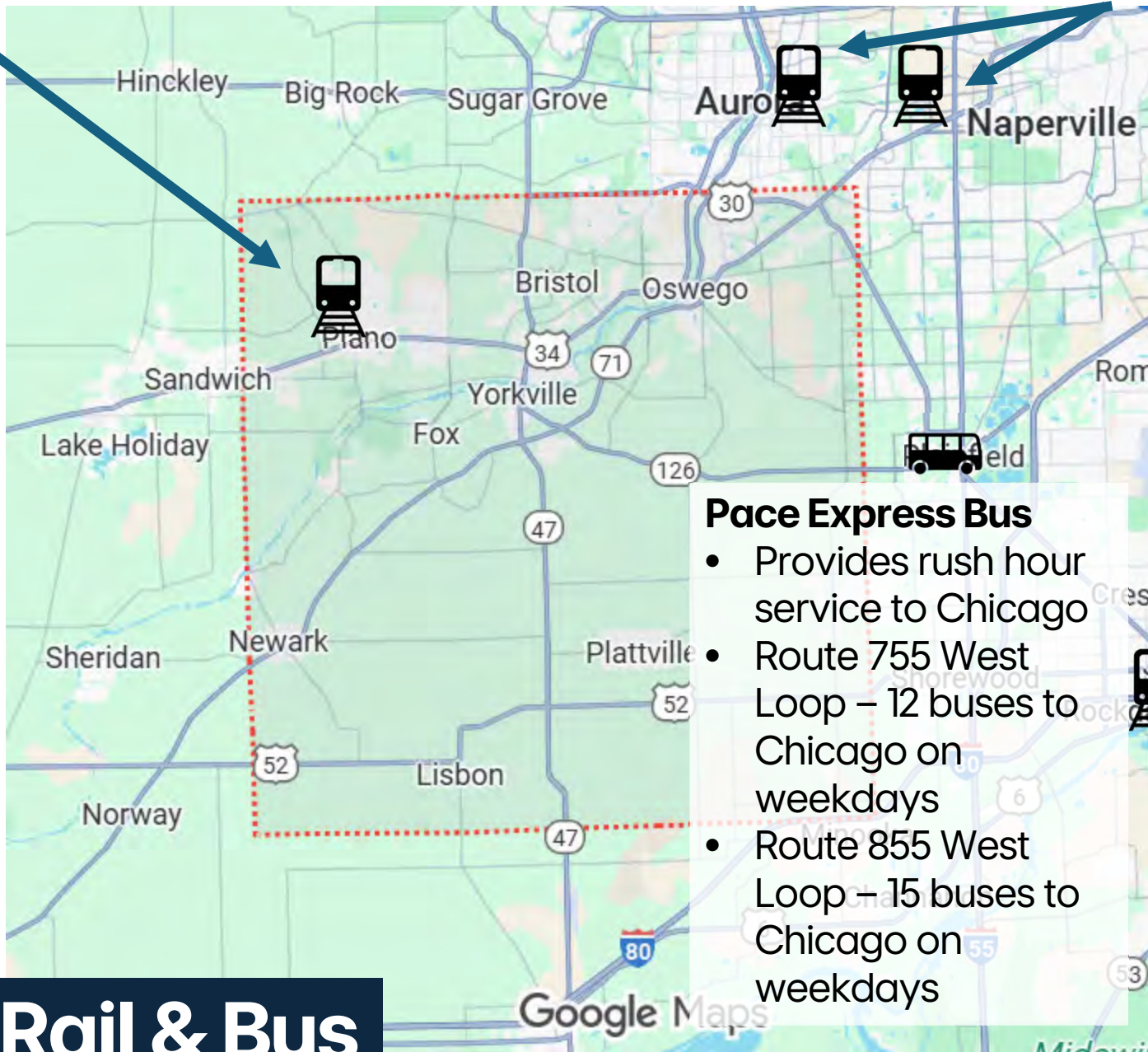
Freight Rail



Major Class 1 Railway with connections throughout North America

Plano Amtrak Station

- Served by 2 routes, both running between Quincy and Chicago
 - IL. Zepher** departs Plano at 9:24am, in Chicago by 10:33. Departs Chicago at 5:55pm, back at Plano by 6:53pm
 - Carl Sanburg** departs Plano at 8:38pm, in Chicago by 9:51pm, return departs Chicago at 7:40am, in Plano by 8:36am



Metra BNSF Line

- Nearest Stations in Downtown Aurora and on Route 59 in Naperville**
- Over 30 trains to Chicago on weekdays, including 8 express trains taking about one hour.

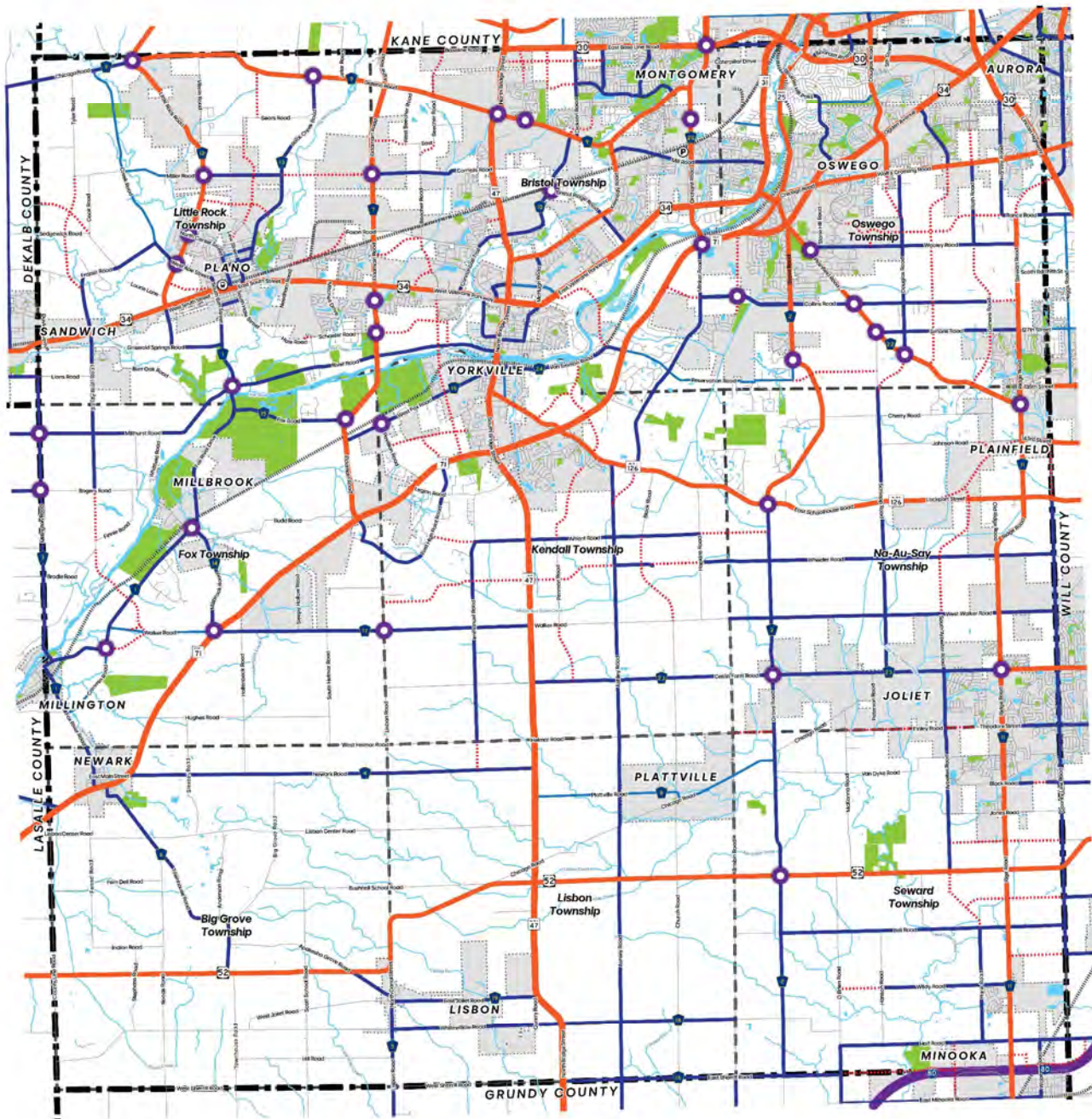
Pace Express Bus

- Provides rush hour service to Chicago
- Route 755 West Loop – 12 buses to Chicago on weekdays
- Route 855 West Loop – 15 buses to Chicago on weekdays

Metra Heritage Corridor

- Nearest Station in Joliet**
- 3 trains daily to Chicago on weekdays, 1:07 estimated travel time

Passenger Rail & Bus



Future Roadway Plan

Roadway Functional Class

- Highway
- Arterial
- Major Collector
- Minor Collector
- Local
- ... Roadway Extensions
- Intersection Improvements

Boundaries

- County
- Township
- Municipal

Other

- Water
- Parks / Forest Preserves
- Railroads
- Railway Station
- Park-n-Ride Facility

DRAFT

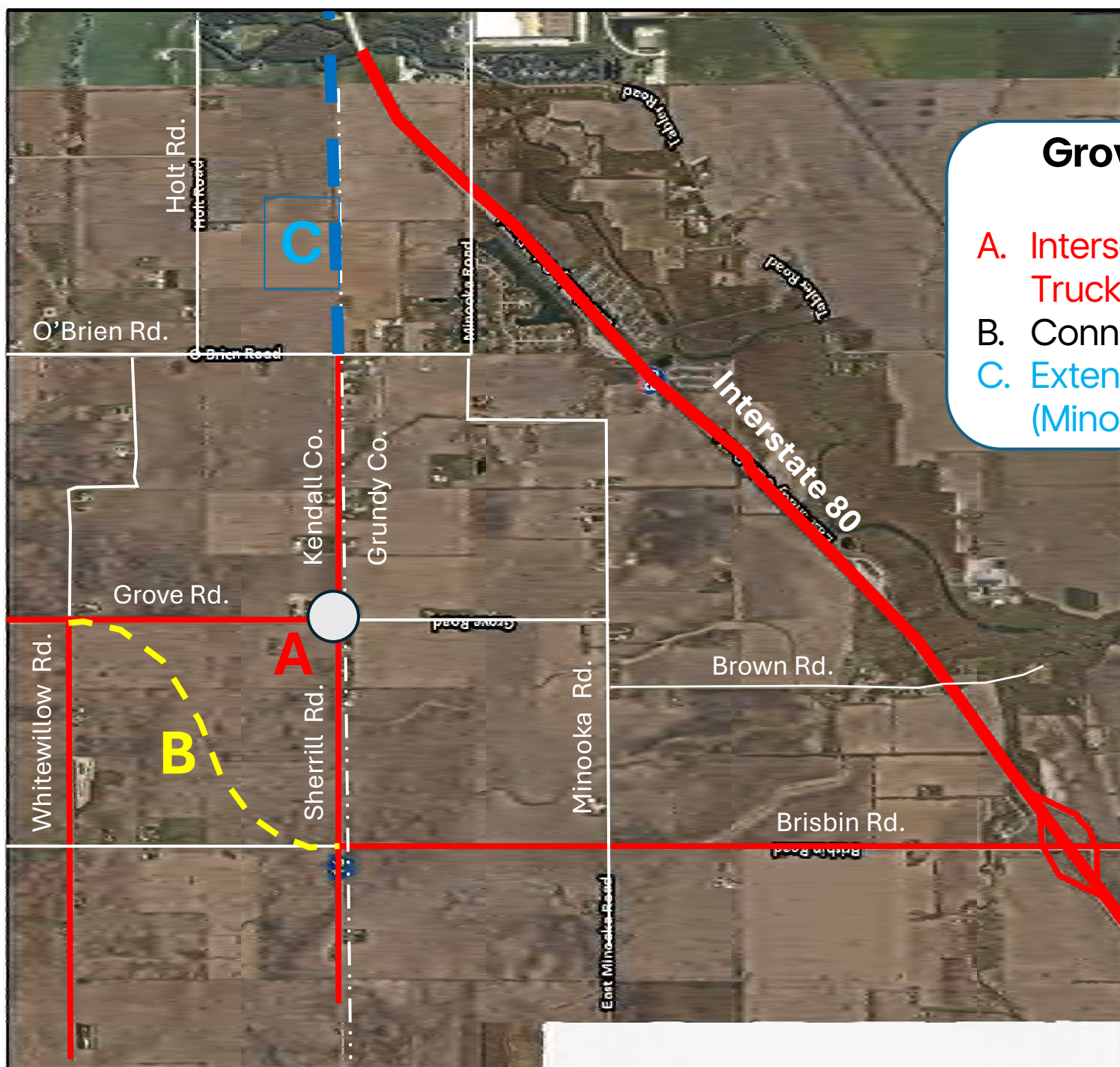
0 1 2 3 4 Miles



10/14/2025



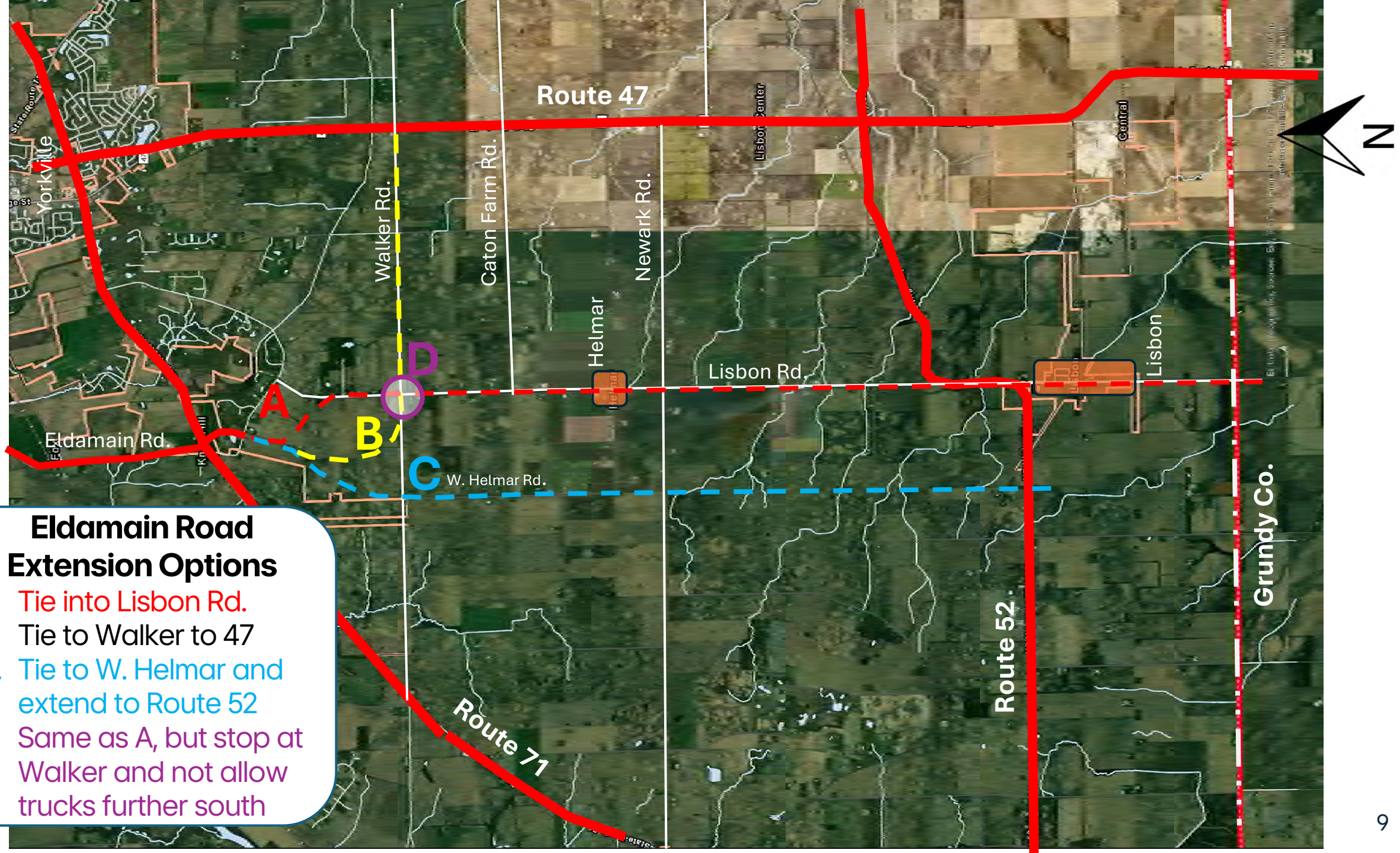
This is a first draft - and has not been reviewed by any County staff, boards, committees or commissions. Significant changes are likely based on that review.



Grove/Brisbin Road Options

- A. Intersection improvement – Trucks north on Grove?
- B. Connect Grove & Brisbin
- C. Extend Sherill to Ridge (Minooka proposal)

9/18/2025, 3:52:56 PM

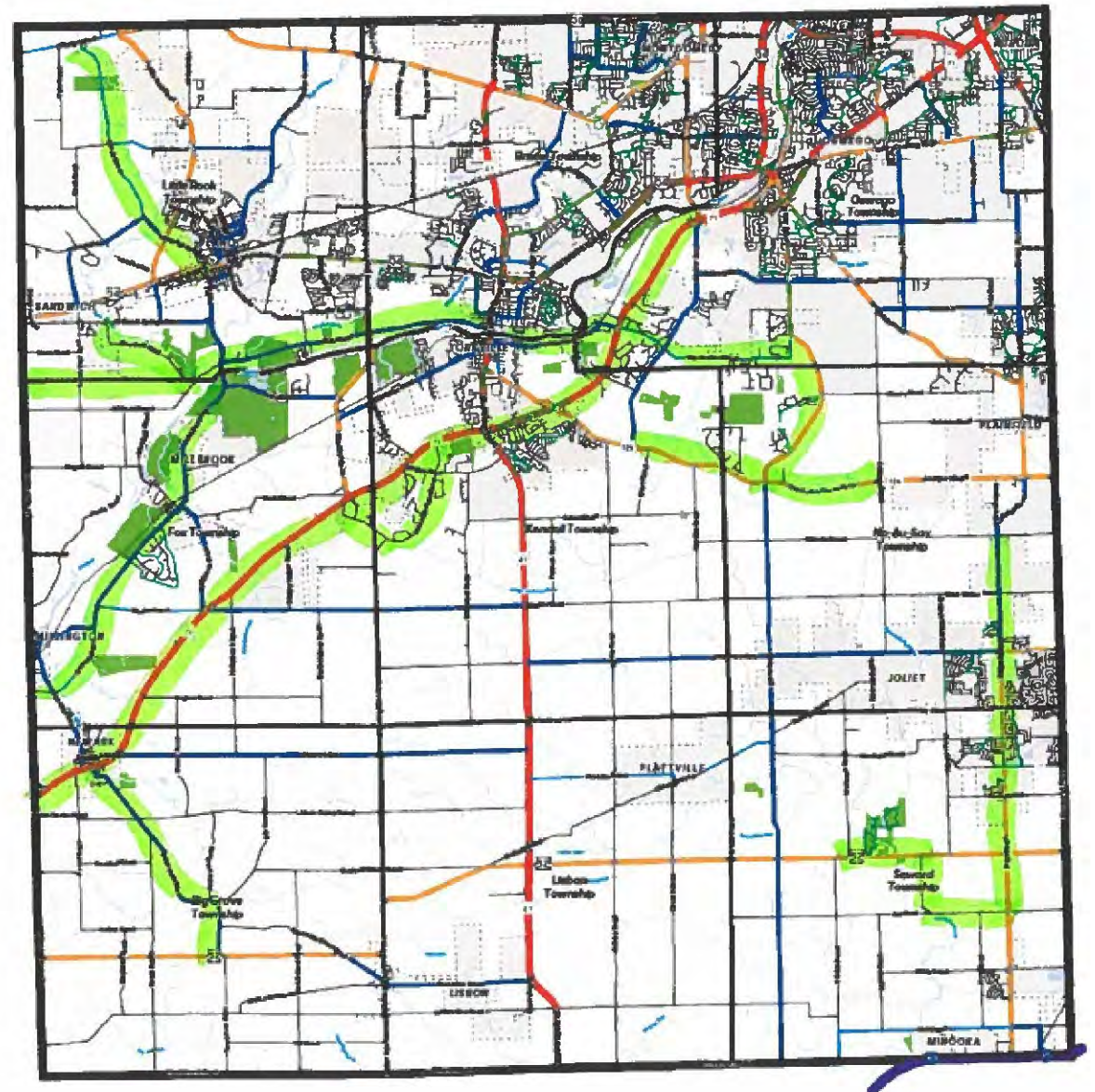


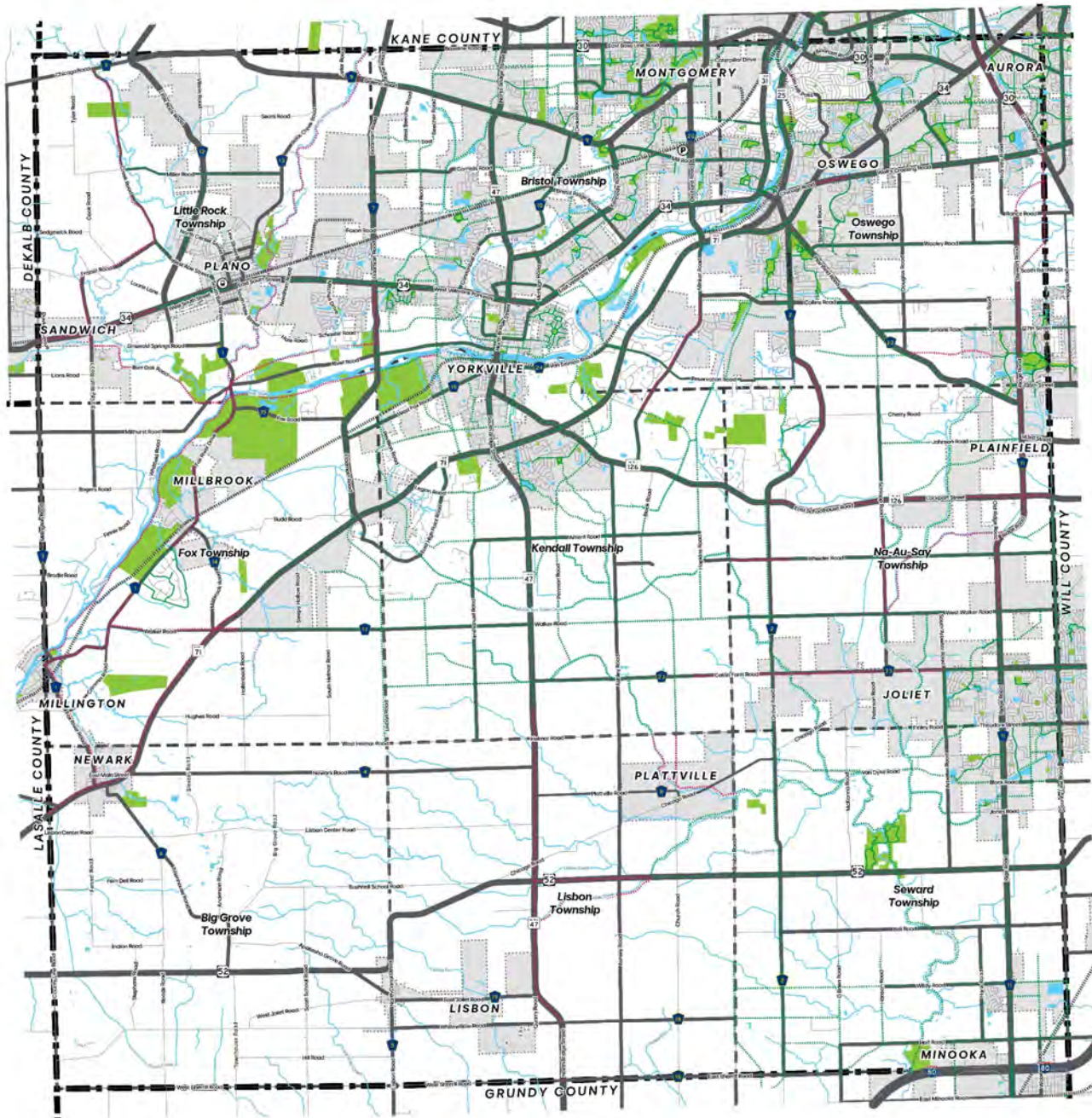
Eldamain Road Extension Options

- A. Tie into Lisbon Rd.
- B. Tie to Walker to 47
- C. Tie to W. Helmar and extend to Route 52
- D. Same as A, but stop at Walker and not allow trucks further south

| Route | Segment |
|------------------|-------------------------------|
| Creek Road | Galena to Little Rock |
| Burr Oak Road | Griswold Springs to Millhurst |
| Millhurst Road | Millington Rd. to Millhurst |
| River Road | Fox River Dr. to Rt. 47 |
| Fox River Drive | River Rd. to County Line |
| Route 71 | Orchard Dr. to County Line |
| Highpoint Rd. | Route 71 to Route 71 |
| Townhouse Rd. | Route 71 to Route 52 |
| Van Emmon Rd. | Yorkville to Route 71 |
| Reservation Rd. | Minkler to Grove |
| Grove Rd. | Reservation to Rt. 126 |
| Route 126 | Schlapp and Minkler |
| Ridge Rd. | Wheeler to Bell |
| Jughandle Rd. | Route 52 to Bell |
| Bell Rd. | Jughandle to Ridge |
| Route 52 | Jughandle to O'Brien |

Scenic Routes





Future Trail Plan

Roadway Functional Class

- Highway
- Arterial
- Major Collector
- Minor Collector
- Local

Off-Street Pathway

- Multi-Use Paths
- Multi-Use Paths Extensions (County Plan)
- Multi-Use Paths Extensions (Municipal Plans)

Boundaries

- County
- Township
- Municipal

Other

- Water
- Parks/Forest Preserves
- Railroads
- Railway Station
- Park-n-Ride Facility

DRAFT

0 1 2 3 4 Miles



10/14/2025



This is a first draft - and has not been reviewed by any County staff, boards, committees or commissions. Significant changes are likely based on that review.

Key Vision Elements

Preserve Rural Character

- Preserve Natural Areas
- Farmland Preservation
- Agritourism

Promote Economic Development

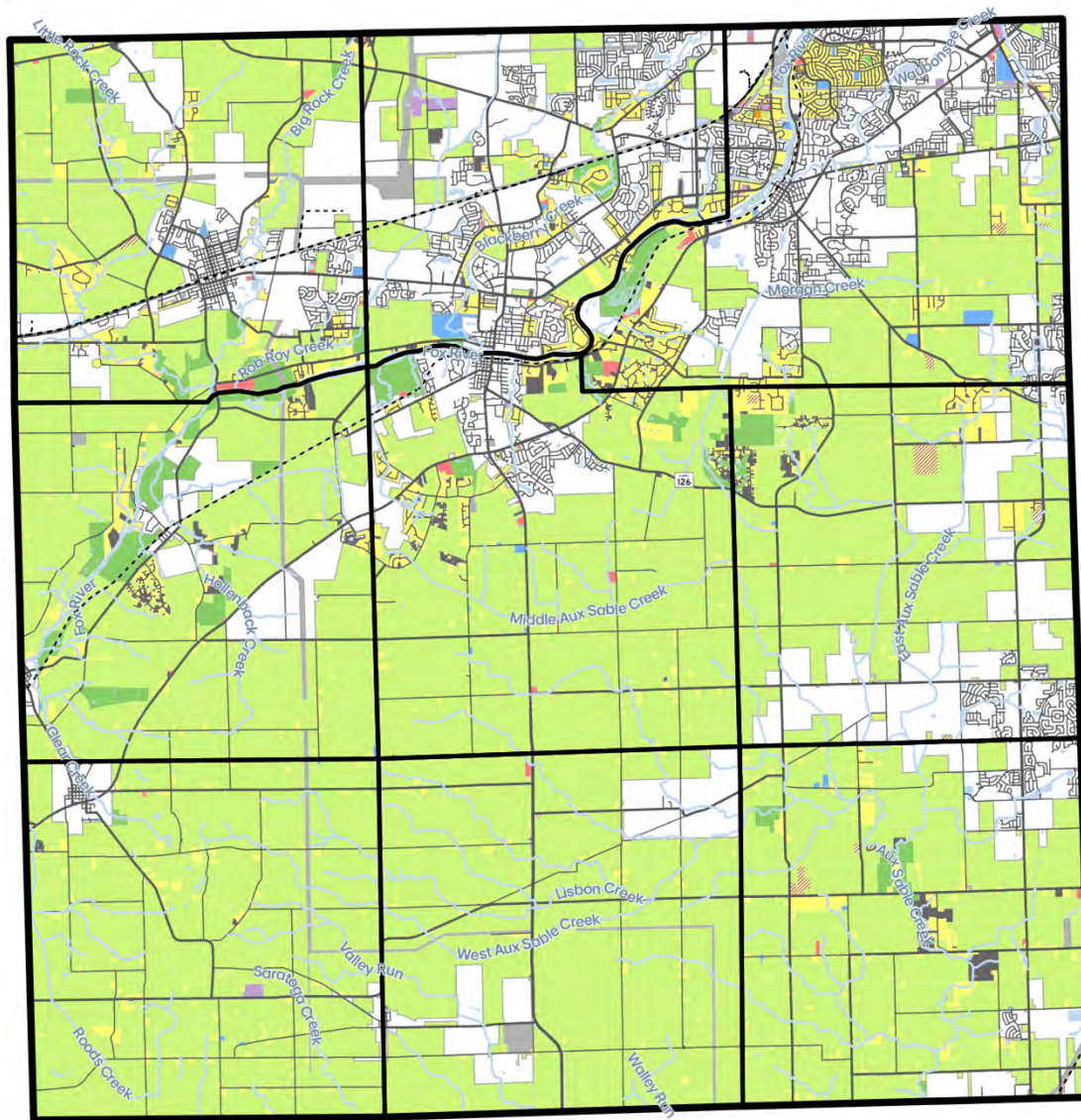
- More local, good paying jobs
- Enhance Tax Base
- Promote Tourism

Communications/Coordination

- Engage residents
- Governmental coordination between County, Towns and Townships

Connectivity

- Expand Trail Network
- Connect roads/Improve intersections




Source: CMAP 2020

0 1.5 3 4.5 6
Miles

Legend

Existing Land Use

-  Agricultural
-  Agricultural Tourism
-  Single-Family Detached
-  Single-Family Attached
-  Multi-Family
-  Commercial
-  Institutional
-  Industrial
-  Utilities
-  Open Space
-  Vacant/Under Construction
-  Water
-  Roadways
-  Railroads
-  County
-  Townships
-  Municipalities

Existing Land Use



Future Land Use Map

Land Use Categories

| | |
|---------------------------|---------------------------|
| Agriculture | Transportation Corridor |
| Agricultural Conservation | Mining |
| Countryside Residential | Potential Mining District |
| Rural Estate Residential | Utility Right of Way |
| Rural Residential | Open Space |
| Suburban Residential | |
| Commercial | |
| Mixed Use Business | |
| Public/Institutional | |

Streets

| | |
|----------|-----------|
| Highway | Collector |
| Arterial | Local |

Boundaries

| |
|-----------|
| County |
| Township |
| Municipal |

Other

| |
|-----------|
| Water |
| Railroads |

DRAFT

0 1 2 3 4 Miles



10/14/2025



This is a first draft - and has not been reviewed by any County staff, boards, committees or commissions. Significant changes are likely based on that review.

What's Next

- Refine Land Use, Transportation and Sustainability Elements and Develop Plan Outline (Teska)
- Review with Committee – Oct. 22nd
- Review with Committee – Dec. 10th
- Schedule Next Round of Workshops
- Committee Review of Draft Plan – Jan. 28th
- Annual Meeting – Public Preview – Feb. 7th